

Dr. Luis Cañas, The Ohio State University

BioWorks Products Included in Trial

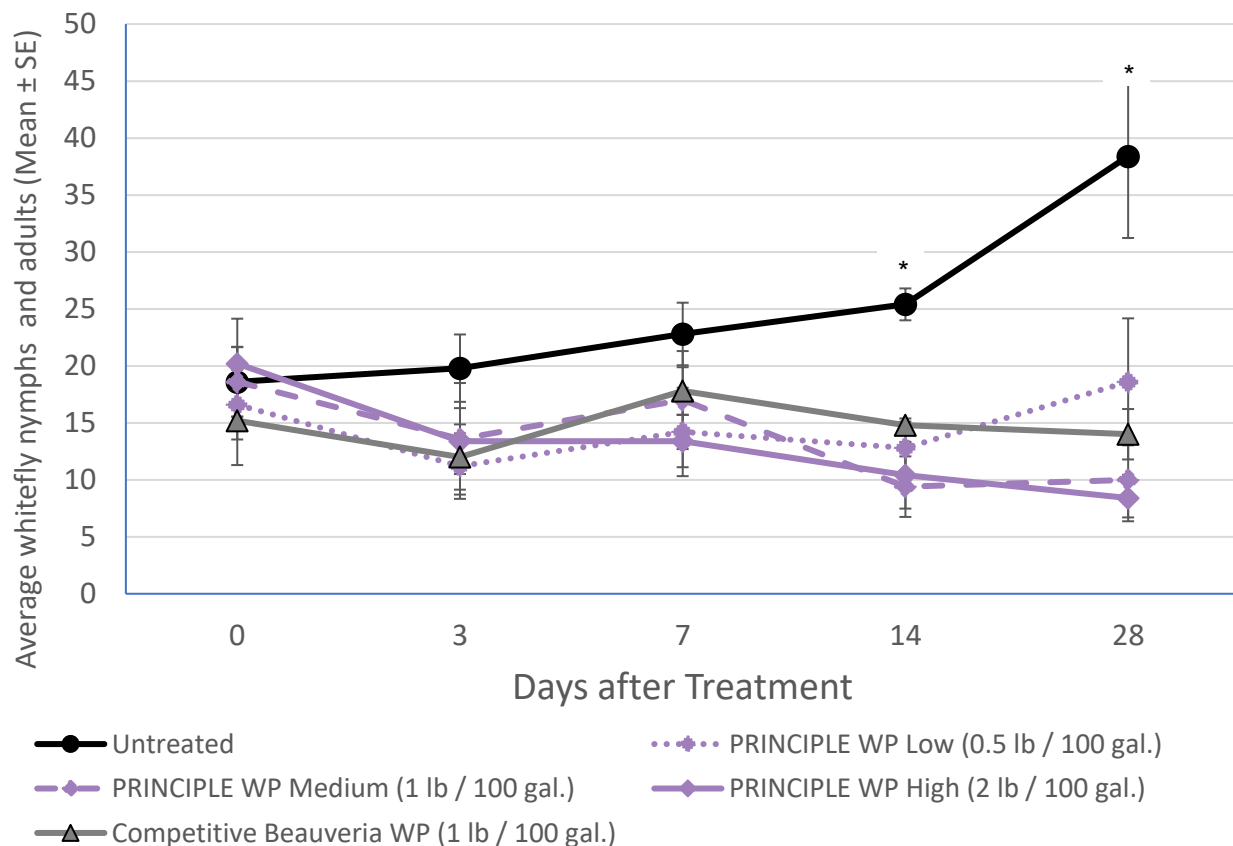
PRINCIPLE WP (*Beauveria bassiana* strain BW149)

Summary:

PRINCIPLE WP controlled sweet potato whitefly on poinsettia.

Treatment	Rate/100 Gallons
Untreated Control	-
PRINCIPLE WP	0.5 lb
PRINCIPLE WP	1 lb
PRINCIPLE WP	2 lb
Competitive <i>Beauveria</i> WP	1 lb

Method Summary	
Crop	Poinsettia (<i>Euphorbia pulcherrima</i> 'Christmas Beauty Red')
Location	Greenhouse
Pest	Sweetpotato Whitefly (<i>Bemisia tabaci</i>)
Trial Design	Randomized complete block, 5 reps/treatment
Application Dates	August 9, 16, 23, 30, 2024
Application Method	Foliar spray



The average number of whitefly nymphs and adults after four foliar spray applications. Days with a star above indicate PRINCIPLE WP treatment(s) statistically significant from the untreated control.

Result Summary

- All PRINCIPLE WP treatments significantly reduced whitefly nymphs and adults by 14 days after initial treatment, with suppression up to 65%.
- There was over 70% reduction in whitefly nymphs and adults by 28 days after initial treatment using both medium (1 lb / 100 gal.) and high (2 lb / 100 gal.) rates of PRINCIPLE WP.
- PRINCIPLE WP provided control similar to the Competitive *Beauveria* WP standard.
- No plant phytotoxicity was observed during the study.

Recommendations from Data

- PRINCIPLE WP can be applied at 0.5 - 2 lb/100 gallons in an integrated program to control whitefly as well as other damaging insect pests.
- Apply PRINCIPLE WP as a fine spray to full coverage, not to the point of run-off.