

# Thrips on Greenhouse Zinnia



BIOWORKS

100 Rawson Road • Suite 205 • Victor, NY 14564 • bioworksinc.com • 800.877.9443

Dr. Luis Cañas, The Ohio State University

## BioWorks Products Included in Trial

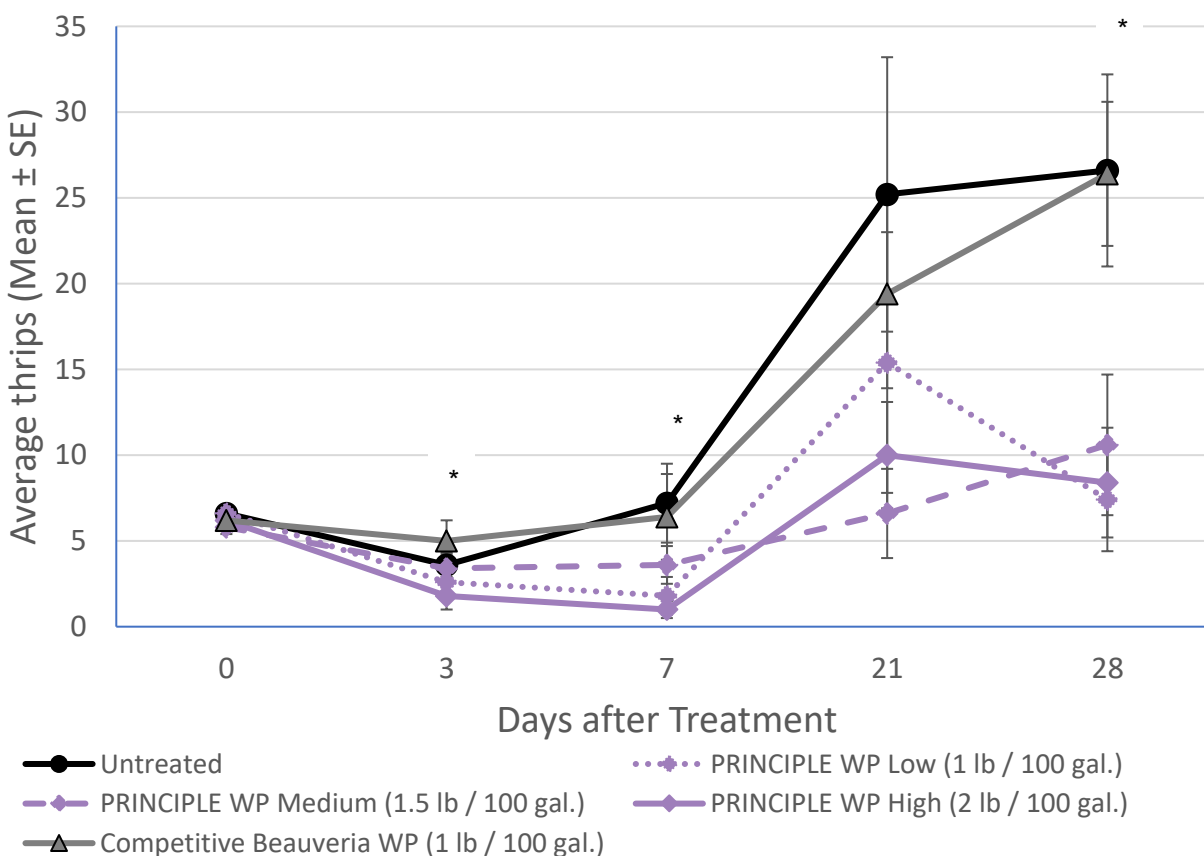
PRINCIPLE WP (*Beauveria bassiana* strain BW149)

### Summary:

PRINCIPLE WP controlled western flower thrips on *Zinnia*.

Treatment	Rate/100 Gallons
Untreated Control	-
PRINCIPLE WP	1 lb
PRINCIPLE WP	1.5 lb
PRINCIPLE WP	2 lb
Competitive <i>Beauveria</i> WP	1 lb

Method Summary	
Crop	<i>Zinnia</i> ( <i>Zinnia elegans</i> 'Queeny Red Lime')
Location	Containerized plants on greenhouse benches
Pest	Western flower thrips ( <i>Frankliniella occidentalis</i> )
Trial Design	Randomized complete block, 5 reps/treatment
Application Dates	July 5, 12, 19, 26 (2024)
Application Method	Foliar spray



Average number of thrips after four foliar spray applications. Days with a star above indicate PRINCIPLE WP treatment(s) statistically significant from the untreated control.

## Result Summary

- All PRINCIPLE WP rates significantly reduced thrips populations by day 28 by over 70%.
- PRINCIPLE WP outperformed the Competitive *Beauveria* WP standard at all time intervals.
- No plant phytotoxicity was observed during the study.

## Recommendations from Data

- PRINCIPLE WP can be applied at 1 - 2 lb / 100 gallons in an integrated program to control thrips as well as other damaging insect pests.
- Apply PRINCIPLE WP as a fine spray to full coverage. Sproinch applications (apply to run off) may be desirable if also targeting pupating thrips in the media.