

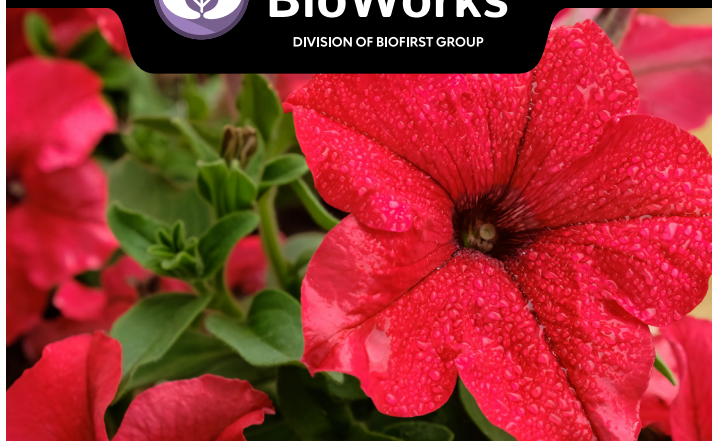


BioWorks®

DIVISION OF BIOFIRST GROUP

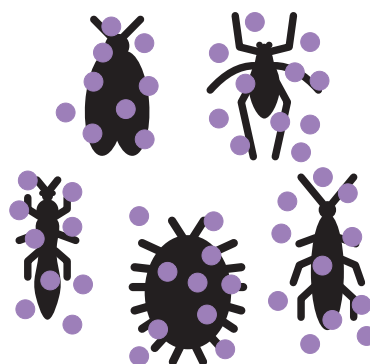


ABOVE AND BEYOND IS WHERE WE BEGIN



PRINCIPLE™ WP

PRINCIPLE WP is a biological insecticide that controls many of the most destructive crop pests including thrips, whiteflies and aphids. Based on the active ingredient *Beauveria bassiana*, PRINCIPLE WP is built on twenty years of successful implementation into grower systems. Combined with BioWorks' expertise, PRINCIPLE WP provides growers with strong efficacy without the risks of insecticide resistance.



B. BASSIANA SPORES IN PRINCIPLE WP ADHERE TO THE HOST, GERMINATE AND PRODUCE ENZYMES THAT ATTACK AND DISSOLVE THE INSECT'S CUTICLE, ALLOWING THE MYCELIA TO PENETRATE AND KILL THE INSECT.

ACTIVE INGREDIENT

Beauveria bassiana Strain BW149

FEATURES AND BENEFITS

- + Easy-to-use WP formulation built on 20 years of experience
- + Complex mode of action provides control without the risk of resistance
- + Provides insect control comparable to conventional insecticide programs
- + Excellent compatibility with conventional pesticides and other biological products
- + OMRI-approved
- + Exempt from residue tolerance

WHERE TO USE

PRINCIPLE WP is for use in greenhouse, nursery, landscape, or field. Apply for control of damaging insect pests, such as thrips, aphids, whiteflies, mealybugs, diamondback moths, cabbage loopers, and more. See label for full list of pests.



PRINCIPLE WP

PRODUCT INFORMATION

- + Available Size: 1 lb
- + Registered for use in the USA
- + EPA Reg. No. 68539-22

REI & PHI

- + 4-hour REI, 0-day PHI

SHELF LIFE

- + Below 32 °F (0 °C): Not Needed
- + Refrigerated 40 °F (4 °C): Not Needed
- + 70-75 °F (21-24 °C): 12 months
- + Above 75 °F (24 °C): Do not store outdoors; store cool and dry

APPLICATION NOTES

- + Apply at first sign or symptom of pest
- + Apply preventative applications at 5-10-day intervals
- + For high pest pressure, increase rate and/or frequency of sprays
- + PRINCIPLE WP is a contact biopesticide; good coverage on the top and bottom of leaves is essential
- + Remaining product should be sealed immediately to prevent moisture accumulation

APPLICATION RATES

- + All pests (except those specified below or on the label) 0.5 – 2 lb/100 gal
- + Whitefly, mealybug, aphids 0.5 – 1 lb/100 gal
- + Thrips 1 – 2 lb/100 gal
- + Low volume fog* 0.5 – 2 lb/5,000-20,000 ft²
- + Dip 0.25 – 0.5 oz/gallon

There is no limit on the number of applications or total amount of product that can be applied in one season.

*Do not use with thermal foggers.

GOING ABOVE AND BEYOND

At BioWorks, we not only help eradicate harmful diseases and pests that threaten your crops, but we design and support integrated plant health management programs. And because we know how quickly some diseases can work, we respond to any questions you might have in just 48 hours. So you can get back to the business of successful growing.



BioWorks®
DIVISION OF BIOFIRST GROUP

BIOWORKS

100 Rawson Road • Suite 205

Victor, NY 14564

expert@bioworksinc.com

bioworksinc.com • 800.877.9443