



BioWorks®



ABOVE AND BEYOND IS WHERE WE BEGIN

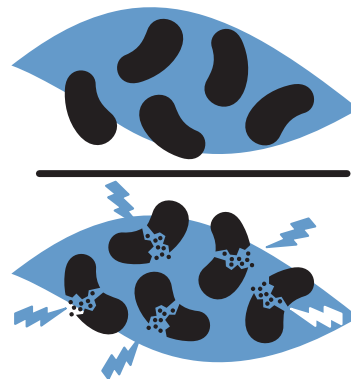


CEASE®

CEASE biofungicide effectively controls a wide range of fungal and bacterial diseases. Its patented bacterium *Bacillus subtilis* strain QST 713 and natural antifungal and antibacterial compounds use multiple modes of action to destroy pathogens.

As a foliar spray or soil drench, use CEASE alone, in rotation, or tank mix with other crop protection products, to provide an excellent tool for resistance management. CEASE is approved for use in organic production, with outstanding plant, human and environmental safety.

When rotated regularly with our MilStop® SP Foliar Fungicide, CEASE can help provide season-long suppression of *Botrytis*, Powdery Mildew, and bacterial leaf spots.



EARLY APPLICATION OF CEASE PROVIDES PROTECTION AGAINST FUNGAL AND BACTERIAL DISEASES BY COLONIZATION OF PLANT SURFACES AND THROUGH THE DISEASE-FIGHTING METABOLITES PRODUCED BY THE BACTERIUM THAT DISRUPT AND DESTROY PATHOGEN CELL MEMBRANES.

ACTIVE INGREDIENTS

Bacillus subtilis strain QST 713

FEATURES AND BENEFITS

- + Controls disease using multi-site modes of action for effective resistance management
- + Shortest REI among fungicides (4 hrs. vs. up to 48 hrs.)
- + Can be sprayed up to and on the day of harvest
- + Improves resistance to diseases by increasing plant's natural defenses
- + Performance equal to copper-based products, without the associated risks of phytotoxicity and resistance
- + Leaves virtually no residue on plants or flowers
- + Safe for beneficial insects and predatory mites
- + Compatible with many chemical and biological inputs and tank mixing/rotating

WHERE TO USE

CEASE is for use in greenhouse, nursery, landscape, interiorscape, shade house and field (except fruits and vegetables); on ornamentals, trees, shrubs, potted and cut flowers, annuals, perennials, foliage, seedlings, conifers, and fruits and vegetables grown in greenhouse/nursery. CEASE suppresses these fungal and bacterial diseases:

- | | |
|---|---|
| + <i>Bacteria: Erwinia, Pseudomonas, Xanthomonas spp.</i> | + Downy Mildew |
| + <i>Alternaria</i> | + Early Blight, Late Blight |
| + Angular Leaf Spot | + Gummy Stem Blight |
| + Anthracnose | + Powdery Mildew |
| + (<i>Colletotrichum</i>) | + Rust |
| + Bacterial & Fungal Leaf Spots | + Scab |
| + <i>Botrytis</i> , Gray Mold | + <i>Sclerotinia</i> |
| + <i>Cercospora</i> | + <i>Septoria</i> |
| | + Soil borne fungi: <i>Fusarium, Phytophthora, Pythium, Rhizoctonia</i> |



CEASE®

PRODUCT INFORMATION

- + Available Sizes: 1 gal & 2.5 gal
- + Registered for use in the USA
- + EPA Reg. No. 264-1155-68539
- + Est. No. 264-MEX-001
- + MPS Code: 3743/White

REI & PHI

- + 4-hour REI, 0-day PHI

SHELF LIFE

- + Below 32 °F (0 °C): Do not freeze
- + Refrigerated 40 °F (4 °C): Not needed
- + 70-75 °F (21-24 °C): 3 years
- + Above 75 °F (24 °C): Store cool

APPLICATION NOTES

- + Should be used preventively when conditions favor disease development, but before the onset of symptoms
- + May be used at the first sign of symptoms
- + Foliar spray: apply with commonly used spray equipment, electrostatic or ultra-low volume equipment
- + Can be applied as often as every 3 days
- + Spray at 7-day intervals for prevention
- + Can be used immediately before or after B-Nine application without concern of phytotoxicity typically associated with coppers
- + Soil drench: apply with spray equipment or through chemigation

APPLICATION RATES

- + Foliar spray: 2-8 qt/100 gal
- + The most common rate is 4 qt/100 gal
- + Add spreader/sticker or wetting agent to improve canopy penetration and coverage
- + Rates will vary depending on disease pressure
- + Maintain a spray solution pH between 4.5 and 8.5
- + May be used with pH-lowering materials without causing injury to plants
- + Soil drench: 4-8 qt/100 gal; begin in propagation; repeat every 3-4 weeks

GOING ABOVE AND BEYOND

At BioWorks, we not only help eradicate harmful diseases and pests that threaten your crops, but we design and support integrated plant health management programs. And because we know how quickly some diseases can work, we respond to any questions you might have in just four hours. So you can get back to the business of successful growing.



BioWorks®

BIOWORKS

100 Rawson Road • Suite 205

Victor, NY 14564

expert@bioworksinc.com

bioworksinc.com • 800.877.9443